

## Product overview

### Product characteristics

- Fast response, suitable for situations where the load changes very fast (such as rolling mill, oil extractor, etc.)
- Zero crossing switching, small inrush current (less than 2 times), no impact on load and equipment
- Automatically adapt to reverse phase sequence, convenient for users



### Operating environment and working conditions

- Ambient temperature:  $-25^{\circ}\text{C} \sim +50^{\circ}\text{C}$ , and the average temperature within 24 hours is not higher than  $+35^{\circ}\text{C}$ .
- Relative humidity:  $+25^{\circ}\text{C}$ , short-term up to 100%
- There is no corrosive gas, no conductive dust, no inflammable and explosive media in the surrounding environment
- There should be no obvious over-limit harmonic component at the installation site (voltage distortion rate 5%)
- The altitude is generally not more than 1000 meters, and the maximum is 2000 meters (additional cooling equipment is required).
- Other special requirements can be negotiated

## Product selection

Product name	Voltage	Compensation class	Control capacity
JKDSC	Q	1A	25
	M 220V Q:380V	1A 共补 3F:分补	25: 25kvar 30: 30kvar 40: 40kvar 45: 45kvar 50: 50kvar

Order example:

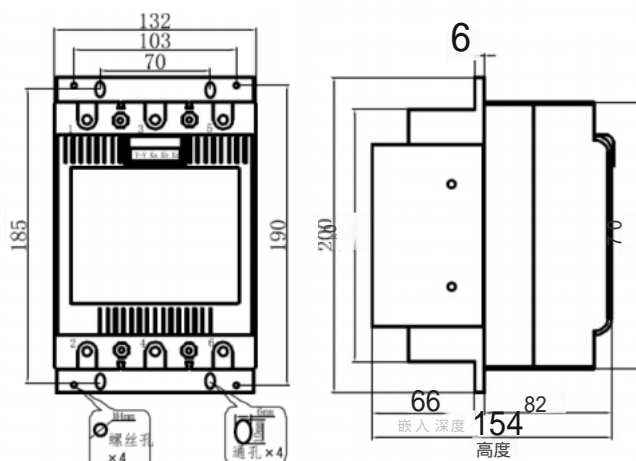
If the customer needs an intelligent reactive power dynamic regulation controller, the voltage is 380V, the compensation category is cocomplement, and the compensation capacity is 25kvar, the corresponding order code is: KJSCQ1A25

## Technical parameter

Rated voltage	380V(total supplement)/3×220V(partial supplement)
Rated frequency	50Hz
Control capacity	380V(cocomplement)25kvar/30kvar/40kvar/50kvar 3×220V(Fractional compensation)30kvar/45kvar
Response time	50ms

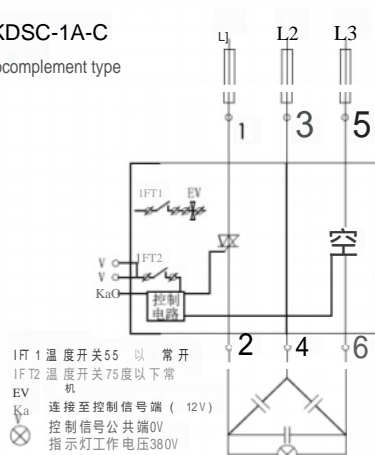
# JKDSC series intelligent reactive power dynamic regulation controller

## Outline and mounting dimensions

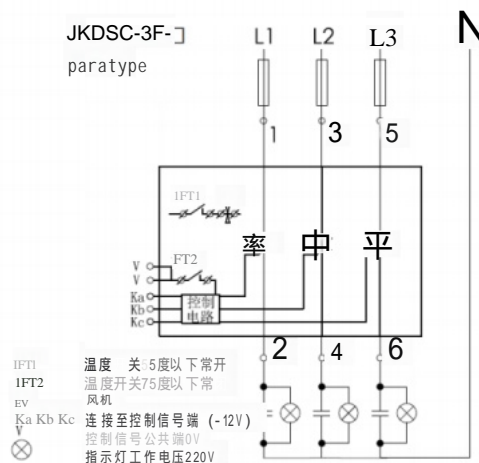


## Wiring diagram

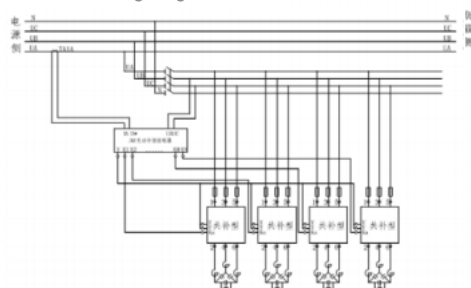
JKDSC-1A-C  
Cocomplement type



JKDSC-3F-  
paratype



Common wiring diagram



Hybrid wiring diagram

